

**FDA
Compliant**

**PRODUCTS ARE
FDA AND VOC
COMPLIANT**



PRODUCTS
TROWEL-GRADE,
SLURRY,
FINISH COATS



MINIMAL DOWNTIME
FAST CURE OPTIONS
FOR RAPID
TURNAROUND



TURNKEY SUPPORT
INDIVIDUALLY
SPECIFIED AND
INSTALLED SYSTEMS

FOOD & BEVERAGE SOLUTIONS FOR YOUR FACILITY



Each Floor application is Unique

Your facility floor plays a vital role in the success of your business. CPI's experienced representatives will help provide you with a project specific, turnkey installation that will meet the toughest food & beverage requirements. **Get confidence back in your floors today.**

CPI
**INDUSTRIAL
COMPANY**

Providing Specified and Installed Flooring Solutions

- RESISTANT TO THERMAL SHOCK
- SEAMLESS WITH INTEGRAL COVE OPTIONS
- SLIP RESISTANT
- EXCELLENT IMPACT AND ABRASION RESISTANCE
- AVAILABLE IN WIDE RANGE OF COLORS AND TEXTURES
- VOC COMPLIANT

CPI UC-SLURRY:

Heavy duty system designed for areas subjected to hot water wash downs and clean in place chemicals. Applied to a thickness of 3/16" to 1/4".

CPI UC-TROWEL-GRADE:

Heavy duty system designed for areas subjected to thermal cycling, physical impact and abrasion. This system is trowel applied to a thickness of 1/4" to 3/8".

CPI UC-Topcoat:

A urethane concrete finish coat designed to lock in aggregate and eliminate porosity. Applied at 15-20 mils in a wide array of colors.

CPI
INDUSTRIAL
COMPANY

P.O. Box 7867

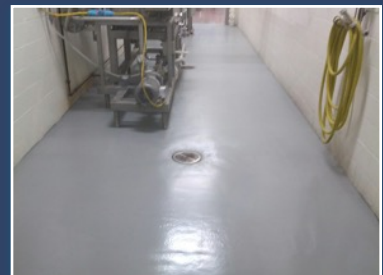
Columbus, Ohio 43207

614-445-080 - Phone

614-445-0299 - Fax



COMPREHENSIVE PRODUCT LINE



Processing

Packaging

Canneries

Bottling

Dairies

Warehouses

Loading Docks